

GEMÜ®



Area of application of GEMÜ mobile bottle systems

- *Pharmaceutical, biotechnology and cosmetics industries*
- *Food and beverage industries*

Advantages

- *Autoclave-capable*
- *The complete sampling path can be sterilized easily before sampling*
- *Microbiologically flawless sampling via a closed system*
- *Connection to existing lines can be easily implemented*
- *Compact and variable due to multi-port valve block solution with various designs, can be adapted to customer requirements*
- *Certified EHEDG diaphragm sealing system*
- *FDA compliant materials*

Sterile Sampling
GEMÜ Mobile Bottle Systems:
The perfect solution for the sampling and transport of liquids

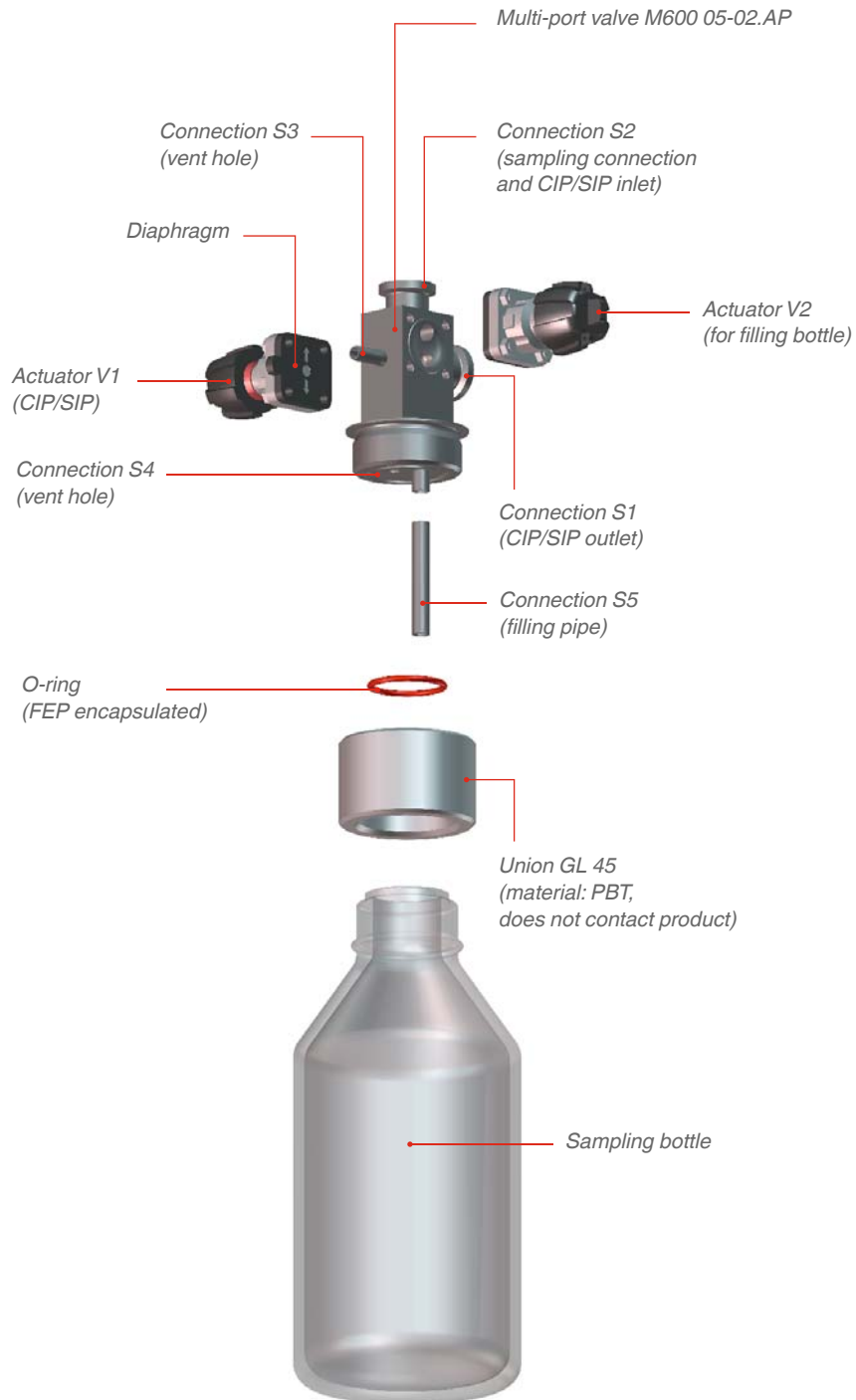


Example: P600M 05-02.AP

www.gemu-group.com

GEMÜ Gebr. Müller Apparatebau GmbH & Co. KG
Fritz-Müller-Strasse 6-8 · D-74653 Ingelfingen-Criesbach
Phone +49 7940 123-0 · Fax +49 7940 123-224
info@gemue.de

GEMÜ Mobile Bottle Systems



Example: P600M 05-02.AP

Reference no. _____

Mobile bottle system specification

Please complete this form and return it to your nearest GEMÜ office or to the address listed below!

Operating pressure (plant-side): _____ bar

Medium temperature: _____ °C

Multi-port valve material:

1.4435

1.4435 BN2 ($\Delta Fe < 0.5\%$)

Other _____

Surface finish of multi-port valve:

1537 (Ra) $\leq 0.4\mu m$ electropolished.

Other _____

Diaphragm material:

EPDM Code

PTFE Code

Other _____

Sampling bottle:

Without

With Schott Duran Pressure plus glass bottle (clear)
(operating pressure: -1 bar to max. 1.5 bar rel.)

1000 ml

500 ml

250 ml

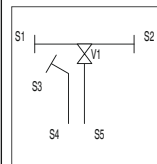
With stainless steel bottle 1.4404 (WAZ 3.1)
(operating pressure: -1 bar to max. 10 bar rel.)

1000 ml

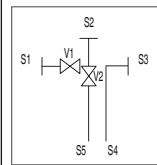
Other _____

Quantity: _____

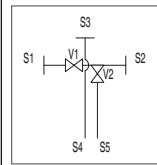
Standard:



P600M 05-01.AP






P600M 05-02.AP



P600M 05-02.BP

If you require a customer-specific version of the multi-port valve block, please also fill out specification sheet M600 for the block.

Spigot	Pipe connection				Actuator			Other
					 GEMÜ 601, manual	 GEMÜ 602, manual	 GEMÜ 650, pneumatic	
Spigot no.	DN	Code	ød(a)[mm]	s[mm]	Actuator type	Control function	Actuator size	Comment/accessories
S1					V1			
S2					V2			
S3					V3			
S4	6	0	8.0	1.0				Vent hole
S5	6	0	8.0	1.0				Filling pipe

The technical details of each enquiry will be checked by GEMÜ.

Contact (GEMÜ): _____

Customer: _____

Department: _____

Address: _____

Telephone: _____ E-mail: _____

Please do not write here!

K-No.: _____

P600: _____

M600: _____

X: _____

GEMÜ Mobile Bottle Systems

● Functional principle

The mobile bottle systems from GEMÜ are suitable for contamination-free sampling and transport of samples to the laboratory or quality assurance station.

The entire sampling unit is easy to sterilize and autoclave-capable.

● Technical data

- **Nominal sizes:**
DN 4 - DN 15
- **Connections:**
Clamp, butt weld spigot, hose barb, others on request
- **Seat sizes:**
MG8
- **Body materials:**
1.4435 (multi-port valve), glass (bottle), others on request
- **Media temperature:**
max. 150 °C (dependent on medium wetted materials)
- **Operating pressure:**
Up to 10 bar (please observe manufacturer's note on glass bottle)
- **Seal materials:**
PTFE, EPDM, FEP, others on request
- **Grades of surface finish / electropolish**
up to 0.4 µm

● Application

- Sterile sampling for laboratory and quality assurance

Safe

EHEDG diaphragm sealing system made of FDA compliant materials

Flawless

Both CIP/SIP-capable and autoclave-capable due to multi-port valve block solution



High-quality

Sampling bottle made of glass or stainless steel

Example: P600M 05-02.AP